



LINE HAUL APPLICATIONS

# THE MICHELIN® X® LINE ENERGY T2 TIRE

Our most fuel-efficient dual trailer tire <sup>(1)</sup> for truckload, long haul transportation. The MICHELIN® X® LINE ENERGY T2 tire is designed for improved tread wear, fuel savings, excellent retreadability and exceptional traction for driver confidence.

Line Haul	Regional	Urban	On/Off Road
Recommended	Acceptable		

Meets  
SmartWay®  
Requirements

(2)



**IMPROVED WEAR**

**FUEL SAVINGS**

**EXCELLENT  
RETREADABILITY**

**EXCEPTIONAL  
TRACTION**

(1) Based on internal rolling resistance tests using ISO 28580 test method using comparable line haul trailer tires in tire size 295/75R22.5 LRG for the MICHELIN® X® Line Energy T2 tire.

(2) Meets SmartWay® Requirements for a trailer tire; verification pending.



# THE MICHELIN® X® LINE ENERGY T2 TIRE

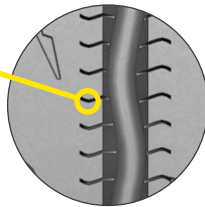
Our most fuel-efficient dual trailer tire <sup>(1)</sup> for truckload, long haul transportation. The MICHELIN® X® LINE ENERGY T2 tire is designed for improved tread wear, fuel savings, excellent retreadability and exceptional traction for driver confidence.

Replaces the MICHELIN® X® LINE ENERGY T tire.

## Combined Benefits Designed to Lower Your Total Cost of Ownership (TCO)

### Improved Wear

- Micro sipes on all rib edges
- Broad, optimized contact patch
- Dual compound tread:
  - Mileage top tread layer controls tread stiffness and stress to reduce irregular wear



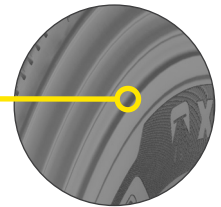
### Fuel Savings

- Dual compound tread:
  - Ultra-fuel efficiency bottom tread layer minimizes internal casing temperatures for low rolling resistance
- Meets SmartWay® requirements



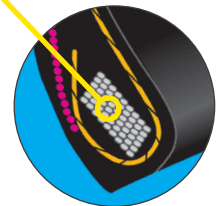
### Excellent Retreadability

- Curb guards and upper sidewall ribs help fight sidewall damage
- Rectangular bead bundle stabilizes bead region and minimizes fatigue to extend casing life
- Designed for durability and multiple retread lives



### Exceptional Traction

- Wet Braking: Better When New. Better When Worn. <sup>(2)</sup>
  - The MICHELIN® X® LINE ENERGY T2 tire has better wet stopping traction when new and worn than two leading competitor tires. <sup>(2)</sup>
- Micro sipes provide biting edges
- Four wide open grooves allow efficient water evacuation



Size	Load Range	Catalog Number	Tread Depth 32nds	Max. Speed (*)		Loaded Radius		Overall Diameter		Overall Width (‡)		Approved Wheels (Measuring wheel listed first.)	Min. Dual Spacing (‡)		Revs Per Mile	Max. Load and Pressure Single				Max. Load and Pressure Dual			
				mph	kph	in.	mm	in.	mm	in.	mm		in.	mm		lbs.	psi	kg.	kPa	lbs.	psi	kg.	kPa
11R22.5	G	49668	11	75	120	19.1	485	40.8	1036	11.3	286	8.25, 7.50	12.5	318	507	6175	105	2800	720	5840	105	2650	720
295/75R22.5	G	24179	11	75	120	18.4	468	39.7	1009	11.0	280	8.25, 9.00	13.2	335	523	6175	110	2800	760	5675	110	2575	760
11R24.5	H	45557	11	75	120	20.0	509	42.7	1085	11.2	285	8.25, 7.50	12.5	318	484	7160	120	3250	830	6610	120	3000	830
285/75R24.5	G	31132	11	75	120	19.1	485	40.6	1032	10.6	270	8.25, 7.50	12.2	311	508	6175	110	2800	760	5675	110	2575	760

Note: Wheel listed first is the measuring wheel.

(1) Based on internal rolling resistance tests using ISO 28580 test method using comparable line haul trailer tires in tire size 295/75R22.5 LRG for the MICHELIN® X® Line Energy T2 tire.

(2) All tires eventually wear out and should be replaced. Based on internal wet braking tests starting from 60 mph (97 kph) on asphalt, measuring peak Mu, using new tires and tires buffed to 6/32nds tread depth, in tire size 295/75R22.5, the MICHELIN® X® LINE ENERGY T2 tire outperformed the Continental EcoPlus HT3 tire by 29% when new and 49% when worn and the Goodyear Fuel Max® LHT® tire by 9% when new and 11% when worn. Actual on-road results may vary. (Note: Peak Mu is a measurement of maximum traction.)

(3) Meets SmartWay® Requirements for a trailer tire; verification pending.

(\*) Exceeding the lawful speed limit is neither recommended nor endorsed.

(‡) Overall widths will change 0.1 inch (2.5 mm) for each 1/4 inch change in wheel width. Minimum dual spacing should be adjusted accordingly.

MICHELIN® tires and tubes are subject to a continuous development program. Michelin North America, Inc. reserves the right to change product specifications at any time without notice or obligations.

MNA, Inc. continually updates its product information to reflect any changes in Industry Standards. Printed material may not reflect the current Load and Inflation information. Please visit [www.business.michelinman.com](http://www.business.michelinman.com) for the latest product information. The actual load and inflation pressure used must not exceed the wheel manufacturer's maximum conditions. Never exceed a wheel manufacturer's limits without permission from the component manufacturer.

TO FIND OUT MORE  
US: [business.michelinman.com](http://business.michelinman.com)  
CA: [michelintruck.com/en\\_CA](http://michelintruck.com/en_CA)

FIND US ON FACEBOOK  
[michelintruck.com](http://michelintruck.com)

CONTACT US BY EMAIL  
US: [business.michelinman.com/contact-us](http://business.michelinman.com/contact-us)  
CA: [michelintruck.com/en\\_CA/contact-us](http://michelintruck.com/en_CA/contact-us)

CONTACT US BY TELEPHONE  
US: 1-888-622-2306  
CA: 1-888-622-2306

Michelin North America Inc., One Parkway South, Greenville, SC 29615

Michelin North America (Canada) Inc., 2500 Daniel Johnson Blvd., Suite 500, Laval (QC) H7T 2P6

© 2021 Michelin North America, Inc. The Michelin Man is a registered trademark owned by Michelin North America, Inc. All rights reserved. An Equal Opportunity Employer (02/21)

© 2021 MNA(C). All rights reserved. PDF Only. (02/21)