

MICHELIN® XTA®2 ENERGY TIRE



**Fuel-efficient⁽¹⁾, small diameter trailer tire
that helps deliver long, even tread wear
in high cube line haul applications.**

(1) Based on industry standard rolling resistance testing of comparable tires or retreads. Actual results may vary, and may be impacted by many factors, to include road conditions, weather and environment, driver performance, etc.



MICHELIN® XTA®2 ENERGY TIRE



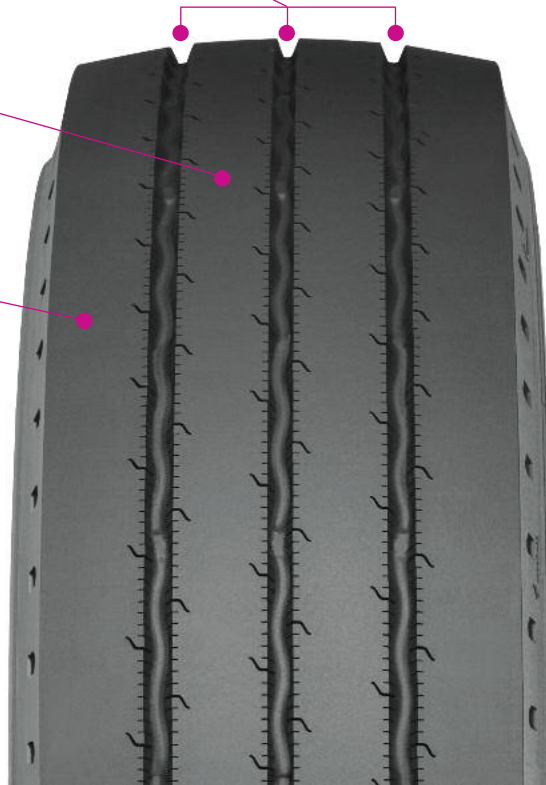
LINE HAUL APPLICATIONS

Fuel-efficient⁽¹⁾, small diameter trailer tire that helps deliver long, even tread wear in high cube in line haul applications.

See-through circumferential grooves promote efficient water evacuation for good wet braking and traction throughout the life of the tire.

Improved retreadability from a stronger, more durable crown package (compared to the MICHELIN® Energy XTA®).

Advanced technology compounds formulated to help provide low rolling resistance and cool operating temperatures.



Size	Load Range	Catalog Number	Tread Depth	Max. Speed (*)	Loaded Radius		Overall Diameter		Overall Width (‡)		Approved Wheels (Measuring wheel listed first.)	Min. Dual Spacing (‡)		Revs Per Mile	Max. Load and Pressure Single				Max. Load and Pressure Dual			
			32nds	mph	in.	mm	in.	mm	in.	mm	in.	mm	in.		mm	lbs.	psi	kg.	kPa	lbs.	psi	kg.
245/70R17.5	J	78370	13	62	14.2	361	31.2	792	9.5	241	6.75, 7.50	10.6	270	670	6005	125	2725	860	5675	125	2575	860

Note: Wheel listed first is the measuring wheel.

(1) Based on industry standard rolling resistance testing of comparable tires or retreads. Actual results may vary, and may be impacted by many factors, to include road conditions, weather and environment, driver performance, etc.

(*) Exceeding the lawful speed limit is neither recommended nor endorsed.

(‡) Overall widths will change 0.1 inch (2.5 mm) for each 1/4 inch change in wheel width. Minimum dual spacing should be adjusted accordingly.

MICHELIN® tires and tubes are subject to a continuous development program. Michelin North America, Inc. reserves the right to change product specifications at any time without notice or obligations.

Please consult wheel manufacturer's load and inflation limits. Never exceed wheel manufacturer's limits without permission of component manufacturer.

www.michelintruck.com

United States

Michelin North America, Inc.
One Parkway South
Greenville, SC 29615
1-888-622-2306

Canada

Michelin North America (Canada), Inc.
2500 Daniel Johnson, Suite 500
Laval, Quebec H7T 2P6
1-888-871-4444

Mexico

Industrias Michelin, S.A. de C.V.
Av. 5 de febrero No. 2113-A
Fracc. Industrial Benito Juarez
7 6120, Querétaro, Qro. Mexico
011 52 442 296 1600